



# *Utensili saldobrasati*

*Brazed tools*

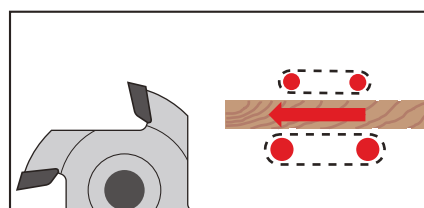
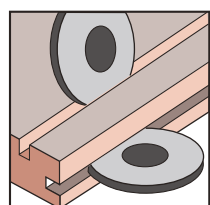
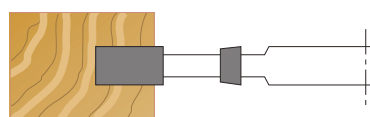
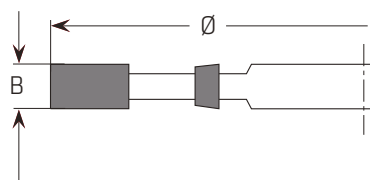
Articolo   Issue	Cod.	Pag.
<b>Frese per incastri   Grooving cutters</b>		
Frese per incastri senza rasanti   <i>Grooving cutters without spurs</i>	TCS01/1 · TCS01/2 TCS01/3	154
Frese per incastri con rasanti   <i>Grooving cutters with spurs</i>	TCS01/4	157
Frese per incastri regolabili con rasanti   <i>Adjustable grooving cutters with spurs</i>	TCS01/5	158
<b>Frese per battute e smussi   Rebating, radius and round cutters</b>		
Frese per battute con rasanti su due lati   <i>Rebating cutters with spurs</i>	TCS02/1	159
Frese per piattabande   <i>Panel-raising cutters</i>	TCS02/2	160
Frese ¼ di tondo   <i>¼ Round cutters</i>	TCS02/3	161
Frese mezzo di tondo   <i>Half-round cutters</i>	TCS02/4	162
Frese ¼ di tondo concavo   <i>Concave ¼ Round cutters</i>	TCS02/5	163
Frese mezzo di tondo concavo   <i>Concave half-round cutters</i>	TCS02/6	164
<b>Frese per piallare e contornare   Planinig and roughing cutters</b>		
Frese per contornare   <i>Joint cutters</i>	TCS03/1	165
Frese a spirali multitaglienti   <i>Spirals multiteeth cutters</i>	TCS03/2	166
<b>Frese per giunzioni   Jointing cutters</b>		
Frese per giunzioni fisse   <i>Glue-jointing cutters</i>	TCS04/1	168
Frese regolabili per giunzioni   <i>Adjustable jointing cutters</i>	TCS04/2	169
<b>Frese per spine   Cutters for double tenoning machines</b>		
Gruppo frese regolabili per spine   <i>Set of adjustable cutters for double tenoning machines</i>	TCS05/1	170
Gruppo frese regolabili per spine per CNC   <i>Set of adjustable cutters for CNC machines</i>	TCS05/2	171

Legenda Disponibilità/Availability:

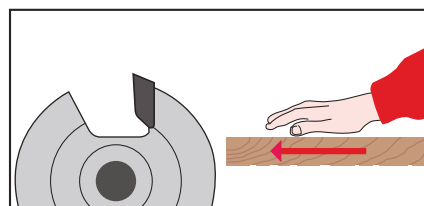
- - Articolo disponibile con spedizione da Twt in 5 gg. lavorativi.
- - *Article available ex stock with delivery from Twt in 5 working days.*
- - Articolo non in stock con spedizione da Twt in 12 gg lavorativi.
- - *Article available in short notice and delivery from Twt in 12 working days.*
- - Articolo non in stock con spedizione da Twt in 20 gg lavorativi.
- - *Article available in medium notice and delivery from Twt in 20 working days.*

# TCS01/1

MEC | HW | Z=4



Versione MAN su richiesta | MAN on request



## Frese saldobrasate per incastri con coltelli HW - senza rasanti - Z4 Brazed grooving cutters with HW knives - without spurs - Z4

Costruite con corpo in acciaio bonificato con 4 taglienti saldobrasati in HW. Ottima finitura, indicate per l'esecuzione di scanalature a spessore fisso. Da montare su macchine toupie, scorniciatrici, etc. Su specifica richiesta le frese possono essere fornite anche con taglienti e rasanti saldobrasati HS.

*Body in hardened and tempered steel with 4 cutting edges brazed in HW. Excellent finish, suitable for running grooves fixed thickness. Can be used on toupie, moulding machines, etc. On request the cutters can be supplied with HS cutting edges.*

### MEC - Z=4 - HW

Ø [mm]	B [mm]	d [mm]	Z	Code	Disp./Avail.
120	4	(30)-40-(50)	4	TCS01.120C.0404	●
120	6	(30)-40-(50)	4	TCS01.120C.0406	●
120	8	(30)-40-(50)	4	TCS01.120C.0408	●
120	10	(30)-40-(50)	4	TCS01.120C.0410	●
120	12	(30)-40-(50)	4	TCS01.120C.0412	●
120	14	(30)-40-(50)	4	TCS01.120C.0414	●

Altre misure disponibili su richiesta | Other dimensions available on request

Ø [mm]	B [mm]	d [mm]	Z	Code	Disp./Avail.
140	4	(30)-40-(50)	4	TCS01.140C.0404	●
140	6	(30)-40-(50)	4	TCS01.140C.0406	●
140	8	(30)-40-(50)	4	TCS01.140C.0408	●
140	10	(30)-40-(50)	4	TCS01.140C.0410	●
140	12	(30)-40-(50)	4	TCS01.140C.0412	●
140	14	(30)-40-(50)	4	TCS01.140C.0414	●

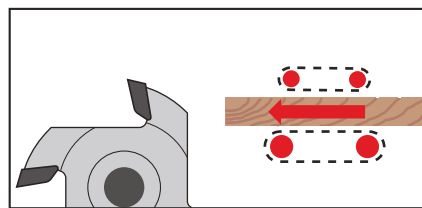
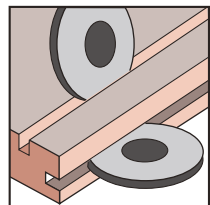
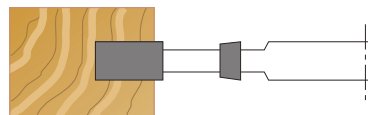
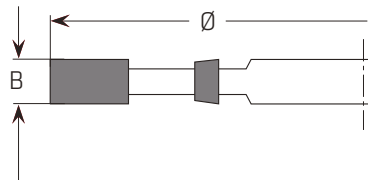
Altre misure disponibili su richiesta | Other dimensions available on request

Ø [mm]	B [mm]	d [mm]	Z	Code	Disp./Avail.
160	4	(30)-40-(50)	4	TCS01.160C.0404	●
160	6	(30)-40-(50)	4	TCS01.160C.0406	●
160	8	(30)-40-(50)	4	TCS01.160C.0408	●
160	10	(30)-40-(50)	4	TCS01.160C.0410	●
160	12	(30)-40-(50)	4	TCS01.160C.0412	●
160	14	(30)-40-(50)	4	TCS01.160C.0414	●

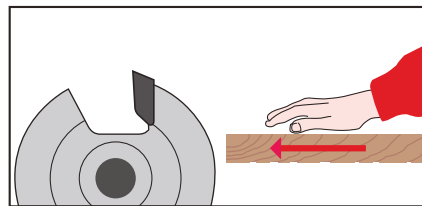
Altre misure disponibili su richiesta | Other dimensions available on request

# TCS01/2

MEC | HW | Z=6



Versione MAN su richiesta | MAN on request



## Frese saldobrasate per incastri con coltelli HW - senza rasanti - Z6 Brazed grooving cutters with HW knives - without spurs - Z6

Costruite con corpo in acciaio bonificato con 6 taglienti saldobrasati in HW. Ottima finitura, indicate per l'esecuzione di scanalature a spessore fisso. Da montare su macchine tosupie, scorniciatrici, etc. Su specifica richiesta le frese possono essere fornite anche con taglienti e rasanti saldobrasati HS.

*Body in hardened and tempered steel with 6 cutting edges brazed in HW. Excellent finish, suitable for running grooves fixed thickness. Can be used on toupie, moulding machines, etc. On request the cutters can be supplied with HS cutting edges.*

### MEC - Z=6 - HW

Ø [mm]	B [mm]	d [mm]	Z	Code	Disp./Avail.
120	4	(30)-40-(50)	6	TCS01.120C.0604	●
120	6	(30)-40-(50)	6	TCS01.120C.0606	●
120	8	(30)-40-(50)	6	TCS01.120C.0608	●
120	10	(30)-40-(50)	6	TCS01.120C.0610	●
120	12	(30)-40-(50)	6	TCS01.120C.0612	●
120	14	(30)-40-(50)	6	TCS01.120C.0614	●

Altre misure disponibili su richiesta | Other dimensions available on request

Ø [mm]	B [mm]	d [mm]	Z	Code	Disp./Avail.
140	4	(30)-40-(50)	6	TCS01.140C.0604	●
140	6	(30)-40-(50)	6	TCS01.140C.0606	●
140	8	(30)-40-(50)	6	TCS01.140C.0608	●
140	10	(30)-40-(50)	6	TCS01.140C.0610	●
140	12	(30)-40-(50)	6	TCS01.140C.0612	●
140	14	(30)-40-(50)	6	TCS01.140C.0614	●
140	16	(30)-40-(50)	6	TCS01.140C.0616	●
140	18	(30)-40-(50)	6	TCS01.140C.0618	●
140	20	(30)-40-(50)	6	TCS01.140C.0620	●

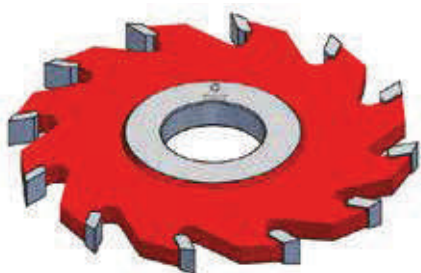
Altre misure disponibili su richiesta | Other dimensions available on request

Ø [mm]	B [mm]	d [mm]	Z	Code	Disp./Avail.
160	4	(30)-40-(50)	6	TCS01.160C.0604	●
160	6	(30)-40-(50)	6	TCS01.160C.0606	●
160	8	(30)-40-(50)	6	TCS01.160C.0608	●
160	10	(30)-40-(50)	6	TCS01.160C.0610	●
160	12	(30)-40-(50)	6	TCS01.160C.0612	●
160	14	(30)-40-(50)	6	TCS01.160C.0614	●

Altre misure disponibili su richiesta | Other dimensions available on request

# TCS01/3

MEC | HW | Z=12



## Frese saldobrasate per incastri con coltelli HW - senza rasanti - Z12 Brazeed grooving cutters with HW knives - without spurs - Z12

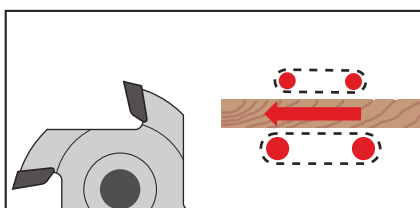
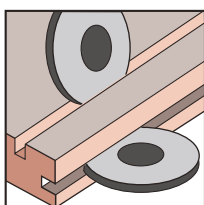
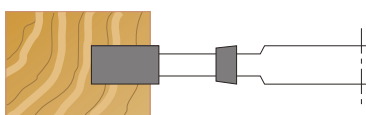
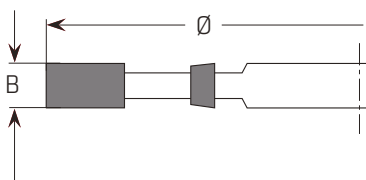
Costruite con corpo in acciaio bonificato con 12 taglienti saldobrasati in HW. Ottima finitura, indicate per l'esecuzione di scanalature a spessore fisso. Da montare su macchine toupie, scorniciatrici, etc. Su specifica richiesta le frese possono essere fornite anche con taglienti e rasanti saldobrasati HS.

*Body in hardened and tempered steel with 12 cutting edges brazed in HW. Excellent finish, suitable for running grooves fixed thickness. Can be used on toupie, moulding machines, etc. On request the cutters can be supplied with HS cutting edges.*

### MEC - Z=12 - HW

Ø [mm]	B [mm]	d [mm]	Z	Code	Disp./Avail.
140	4	(30)-40-(50)	12	<b>TCS01.140C.1204</b>	●
140	6	(30)-40-(50)	12	<b>TCS01.140C.1206</b>	●
140	8	(30)-40-(50)	12	<b>TCS01.140C.1208</b>	●
140	10	(30)-40-(50)	12	<b>TCS01.140C.1210</b>	●
140	12	(30)-40-(50)	12	<b>TCS01.140C.1212</b>	●
140	14	(30)-40-(50)	12	<b>TCS01.140C.1214</b>	●

Altre misure disponibili su richiesta | Other dimensions available on request



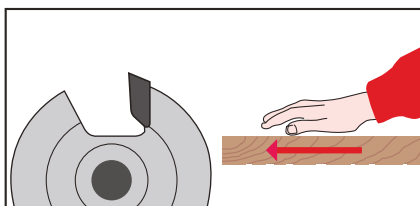
Ø [mm]	B [mm]	d [mm]	Z	Code	Disp./Avail.
160	4	(30)-40-(50)	12	<b>TCS01.160C.1204</b>	●
160	6	(30)-40-(50)	12	<b>TCS01.160C.1206</b>	●
160	8	(30)-40-(50)	12	<b>TCS01.160C.1208</b>	●
160	10	(30)-40-(50)	12	<b>TCS01.160C.1210</b>	●
160	12	(30)-40-(50)	12	<b>TCS01.160C.1212</b>	●
160	14	(30)-40-(50)	12	<b>TCS01.160C.1214</b>	●

Altre misure disponibili su richiesta | Other dimensions available on request

Ø [mm]	B [mm]	d [mm]	Z	Code	Disp./Avail.
200	4	(30)-40-(50)	12	<b>TCS01.200C.1204</b>	●
200	6	(30)-40-(50)	12	<b>TCS01.200C.1206</b>	●
200	8	(30)-40-(50)	12	<b>TCS01.200C.1208</b>	●
200	10	(30)-40-(50)	12	<b>TCS01.200C.1210</b>	●
200	12	(30)-40-(50)	12	<b>TCS01.200C.1212</b>	●
200	14	(30)-40-(50)	12	<b>TCS01.200C.1214</b>	●

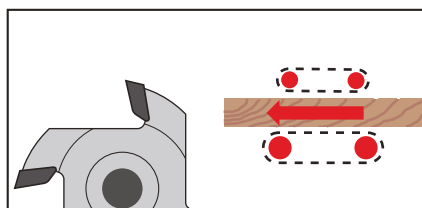
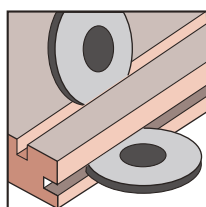
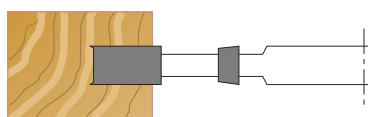
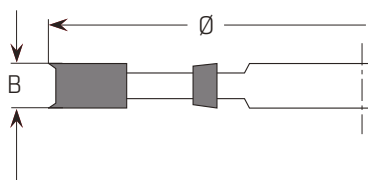
Altre misure disponibili su richiesta | Other dimensions available on request

Versione MAN su richiesta | MAN on request

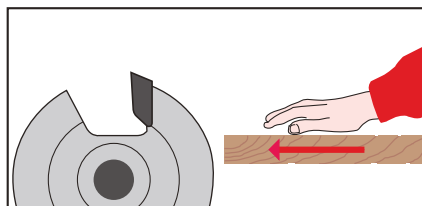


# TCS01/4

MEC | HW | Z=4+4



Versione MAN su richiesta | MAN on request



## Frese saldobrasate per incastri con coltelli HW - con rasanti - Z4+4 Brazed grooving cutters with HW knives - with spurs - Z4+4

Costruite con corpo in acciaio bonificato con 4 taglienti e 4 rasanti saldobrasati in HW. Ottima finitura, indicate per l'esecuzione di scanalature a spessore fisso. Da montare su macchine toouple, scorniciatrici, etc. Su specifica richiesta le frese possono essere fornite anche con taglienti e rasanti saldobrasati HS.

*Body in hardened and tempered steel with 4 cutting edges and 4 spurs brazed in HW. Excellent finish, suitable for running grooves fixed thickness. Can be used on toupie, moulding machines, etc. On request the cutters can be supplied with HS cutting edges.*

### MEC - Z=4+4 - HW

Ø [mm]	B [mm]	d [mm]	Z	Code	Disp./Avail.
120	4	(30)-40-(50)	4+4	TCS01.120C.0804	●
120	5	(30)-40-(50)	4+4	TCS01.120C.0805	●
120	6	(30)-40-(50)	4+4	TCS01.120C.0806	●
120	8	(30)-40-(50)	4+4	TCS01.120C.0808	●
120	10	(30)-40-(50)	4+4	TCS01.120C.0810	●
120	12	(30)-40-(50)	4+4	TCS01.120C.0812	●
120	14	(30)-40-(50)	4+4	TCS01.120C.0814	●

Altre misure disponibili su richiesta | Other dimensions available on request

Ø [mm]	B [mm]	d [mm]	Z	Code	Disp./Avail.
140	4	(30)-40-(50)	4+4	TCS01.140C.0804	●
140	5	(30)-40-(50)	4+4	TCS01.140C.0805	●
140	6	(30)-40-(50)	4+4	TCS01.140C.0806	●
140	8	(30)-40-(50)	4+4	TCS01.140C.0808	●
140	10	(30)-40-(50)	4+4	TCS01.140C.0810	●
140	12	(30)-40-(50)	4+4	TCS01.140C.0812	●
140	14	(30)-40-(50)	4+4	TCS01.140C.0814	●

Altre misure disponibili su richiesta | Other dimensions available on request

Ø [mm]	B [mm]	d [mm]	Z	Code	Disp./Avail.
160	4	(30)-40-(50)	4+4	TCS01.160C.0804	●
160	5	(30)-40-(50)	4+4	TCS01.160C.0805	●
160	6	(30)-40-(50)	4+4	TCS01.160C.0806	●
160	8	(30)-40-(50)	4+4	TCS01.160C.0808	●
160	10	(30)-40-(50)	4+4	TCS01.160C.0810	●
160	12	(30)-40-(50)	4+4	TCS01.160C.0812	●
160	14	(30)-40-(50)	4+4	TCS01.160C.0814	●

Altre misure disponibili su richiesta | Other dimensions available on request

Ø [mm]	B [mm]	d [mm]	Z	Code	Disp./Avail.
200	4	(30)-40-(50)	4+4	TCS01.200C.0804	●
200	5	(30)-40-(50)	4+4	TCS01.200C.0805	●
200	6	(30)-40-(50)	4+4	TCS01.200C.0806	●
200	8	(30)-40-(50)	4+4	TCS01.200C.0808	●
200	10	(30)-40-(50)	4+4	TCS01.200C.0810	●
200	12	(30)-40-(50)	4+4	TCS01.200C.0812	●
200	14	(30)-40-(50)	4+4	TCS01.200C.0814	●

Altre misure disponibili su richiesta | Other dimensions available on request

# TCS01/5

MEC | HW | Z=4 V=4



## Frese saldobrasate per incastri regolabili - con rasanti - Z4 + V4 Adjustable brazen grooving cutters - with spurs - Z4 + V4

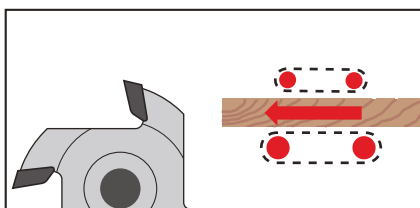
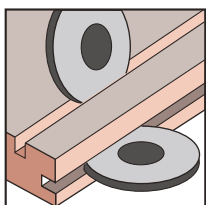
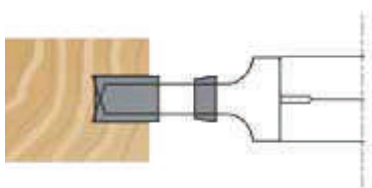
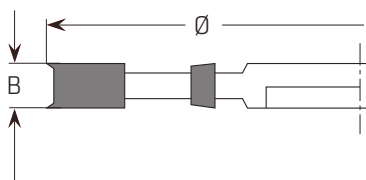
Costruite con corpo in acciaio bonificato con 4 taglienti e 4 rasanti saldobrasati in HW. Ottima finitura, indicate per l'esecuzione di scanalature a spessore fisso. Da montare su macchine toupie, scorniatrici, etc. Su specifica richiesta le frese possono essere fornite anche con taglienti e rasanti saldobrasati HS.

*Body in hardened and tempered steel with 4 cutting edges and 4 spurs brazed in HW. Excellent finish, suitable for running grooves fixed thickness. Can be used on toupie, moulding machines, etc. On request the cutters can be supplied with HS cutting edges.*

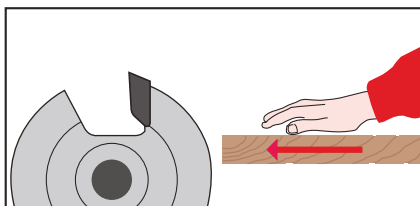
### MEC - Z=4 + V=4 - HW

Ø [mm]	B [mm]	d [mm]	Z	V	Code	Disp./Avail.
150	4 - 7,5	(30)- <b>40</b> -(50)	4	4	<b>TCS01.150C.4407</b>	●
150	7,5 - 14,5	(30)- <b>40</b> -(50)	4	4	<b>TCS01.150C.4414</b>	●
150	10 - 19	(30)- <b>40</b> -(50)	4	4	<b>TCS01.150C.4419</b>	●

Altre misure disponibili su richiesta | Other dimensions available on request

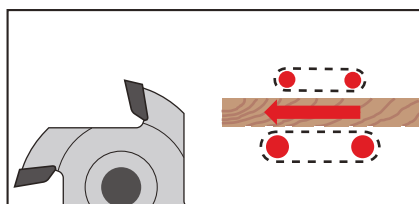
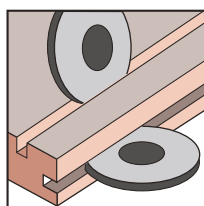
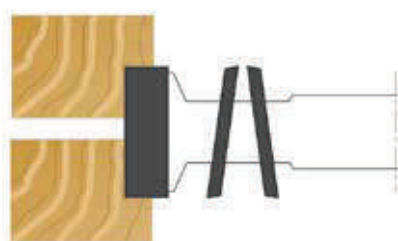


Versione MAN su richiesta | MAN on request

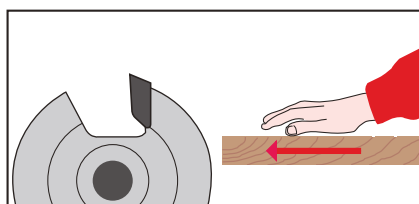


# TCS02/1

MEC | HW | Z=4 V=4



Versione MAN su richiesta | MAN on request



## Frese saldobrasate per battute con coltelli HW - con rasanti - Z4 + V4 Braze rebating cutters with HW knives - with spurs - Z4 + V4

Costruite con corpo in acciaio bonificato con 4 taglienti e 4 rasanti saldobrasati in HW. Buona finitura grazie ai rasanti e denti assiali alternati. Indicate per l'esecuzione di battute superiori o inferiori di pannelli. Adatte per lavorare legni massicci. Da montare su macchine toupie, scorniciatrici, etc. Su specifica richiesta le frese possono essere fornite anche con taglienti e rasanti saldobrasati HS.

*Body in hardened and tempered steel with 4 cutting edges and 4 spurs brazed in HW. Good finish thanks to spurs and alternated axial cutting edges. Indicated for running rebating top and bottom of panels. Suitable for working solid wood. Can be used on toupie, moulding machines, etc. On request the cutters can be supplied with HS cutting edges and spurs.*

### MEC - Z=4+4 - HW

Ø [mm]	B [mm]	d [mm]	Z	V	Code	Disp./Avail.
120	20	(30)-40-(50)	4	4	TCS02.120C.4420	●
120	25	(30)-40-(50)	4	4	TCS02.120C.4425	●
120	30	(30)-40-(50)	4	4	TCS02.120C.4430	●
120	35	(30)-40-(50)	4	4	TCS02.120C.4435	●
120	40	(30)-40-(50)	4	4	TCS02.120C.4440	●
120	50	(30)-40-(50)	4	4	TCS02.120C.4450	●
120	60	(30)-40-(50)	4	4	TCS02.120C.4460	●
120	70	(30)-40-(50)	4	4	TCS02.120C.4470	●
120	80	(30)-40-(50)	4	4	TCS02.120C.4480	●

Altre misure disponibili su richiesta | Other dimensions available on request

Ø [mm]	B [mm]	d [mm]	Z	V	Code	Disp./Avail.
160	20	(30)-40-(50)	4	4	TCS02.160C.4420	●
160	25	(30)-40-(50)	4	4	TCS02.160C.4425	●
160	30	(30)-40-(50)	4	4	TCS02.160C.4430	●
160	35	(30)-40-(50)	4	4	TCS02.160C.4435	●
160	40	(30)-40-(50)	4	4	TCS02.160C.4440	●
160	50	(30)-40-(50)	4	4	TCS02.160C.4450	●
160	60	(30)-40-(50)	4	4	TCS02.160C.4460	●
160	70	(30)-40-(50)	4	4	TCS02.160C.4470	●
160	80	(30)-40-(50)	4	4	TCS02.160C.4480	●

Altre misure disponibili su richiesta | Other dimensions available on request

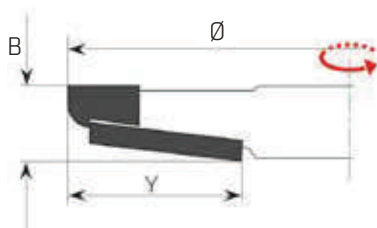
Ø [mm]	B [mm]	d [mm]	Z	V	Code	Disp./Avail.
200	20	(30)-40-(50)	4	4	TCS02.200C.4420	●
200	25	(30)-40-(50)	4	4	TCS02.200C.4425	●
200	30	(30)-40-(50)	4	4	TCS02.200C.4430	●
200	35	(30)-40-(50)	4	4	TCS02.200C.4435	●
200	40	(30)-40-(50)	4	4	TCS02.200C.4440	●
200	50	(30)-40-(50)	4	4	TCS02.200C.4450	●
200	60	(30)-40-(50)	4	4	TCS02.200C.4460	●
200	70	(30)-40-(50)	4	4	TCS02.200C.4470	●
200	80	(30)-40-(50)	4	4	TCS02.200C.4480	●

Altre misure disponibili su richiesta | Other dimensions available on request

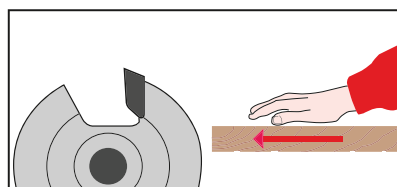
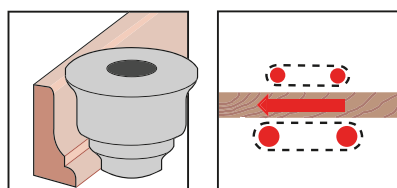
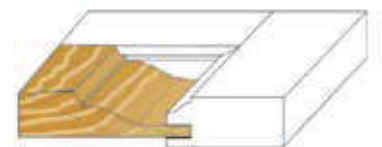
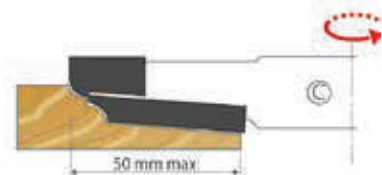
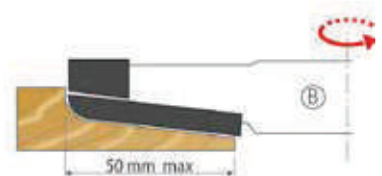
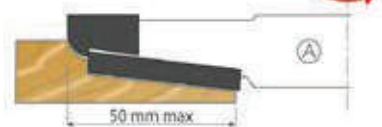


# TCS02/2

MEC | HW



EXAMPLES OF PROFILE



## Frese saldobrasate per piattabande con coltelli HW

### Panel-raising brazed cutters with HW knives

Costruite con corpo in acciaio bonificato con taglienti saldobrasati in HW. Adatte per l'esecuzione di specchietti e per pannelli in generale. Da montare su macchine toupie, scorniciatrici, squadratrici, etc.

Body in hardened and tempered steel with HW brazed cutting edges. Indicated for the execution of central panels for cabinet, door panels, etc. Can be used on toupie, moulder machines and double end tenoner machines, etc.

#### Mod. A

Ø [mm]	B [mm]	d [mm]	Z	Code	Disp./Avail.
200	20	(35)- <b>40</b> -(50)	3	<b>TCS02.200C.PA03</b>	●
200	20	(35)- <b>40</b> -(50)	4	<b>TCS02.200C.PA04</b>	●
200	20	(35)- <b>40</b> -(50)	6	<b>TCS02.200C.PA06</b>	●
200	20	(35)- <b>40</b> -(50)	3 + 3	<b>TCS02.200C.PA33</b>	●
200	20	(35)- <b>40</b> -(50)	4 + 4	<b>TCS02.200C.PA44</b>	●

Altre misure disponibili su richiesta | Other dimensions available on request

#### Mod. B

Ø [mm]	B [mm]	d [mm]	Z	Code	Disp./Avail.
200	20	(35)- <b>40</b> -(50)	3	<b>TCS02.200C.PB03</b>	●
200	20	(35)- <b>40</b> -(50)	4	<b>TCS02.200C.PB04</b>	●
200	20	(35)- <b>40</b> -(50)	6	<b>TCS02.200C.PB06</b>	●
200	20	(35)- <b>40</b> -(50)	3 + 3	<b>TCS02.200C.PB33</b>	●
200	20	(35)- <b>40</b> -(50)	4 + 4	<b>TCS02.200C.PB44</b>	●

Altre misure disponibili su richiesta | Other dimensions available on request

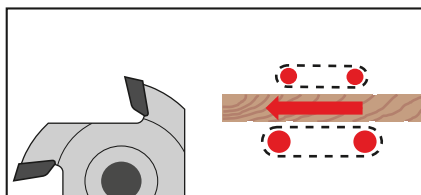
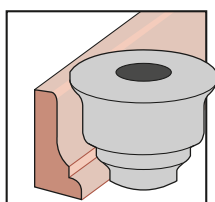
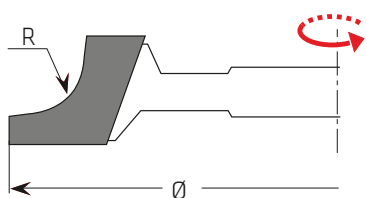
#### Mod. C

Ø [mm]	B [mm]	d [mm]	Z	Code	Disp./Avail.
200	20	(35)- <b>40</b> -(50)	3	<b>TCS02.200C.PC03</b>	●
200	20	(35)- <b>40</b> -(50)	4	<b>TCS02.200C.PC04</b>	●
200	20	(35)- <b>40</b> -(50)	6	<b>TCS02.200C.PC06</b>	●
200	20	(35)- <b>40</b> -(50)	3 + 3	<b>TCS02.200C.PC33</b>	●
200	20	(35)- <b>40</b> -(50)	4 + 4	<b>TCS02.200C.PC44</b>	●

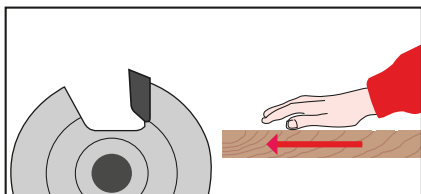
Altre misure disponibili su richiesta | Other dimensions available on request

# TCS02/3

MEC | HW | Z=4



Versione MAN su richiesta | MAN on request



## Frese saldobrasate ¼ di tondo con coltelli HW - Z4

### ¼ Round brazed cutters with HW knives - Z4

Costruite con corpo in acciaio bonificato con 4 taglienti saldobrasati in HW. Indicate per eseguire raggiature di bordi. Da montare su macchine toupie, scorniatrici, etc. Su specifica richiesta le frese possono essere fornite anche con taglienti saldobrasati in HS.

Body in hardened and tempered steel with 4 HW brazed cutting edges. Indicated for the execution of radius profiles on edges. Can be used on toupie, moulder machines and double end tenoner machines, etc. On request the cutters can be supplied with HS cutting edges.

#### MEC - Z=4 - HW - Mod. A

Ø [mm]	R [mm]	d [mm]	Z	Code	Disp./Avail.
120	5	30-(50)	4	TCS02.120A.QA05	●
120	10	30-(50)	4	TCS02.120A.QA10	●
120	15	30-(50)	4	TCS02.120A.QA15	●
120	20	30-(50)	4	TCS02.120A.QA20	●
140	5	30-(50)	4	TCS02.140A.QA05	●
140	10	30-(50)	4	TCS02.140A.QA10	●
140	15	30-(50)	4	TCS02.140A.QA15	●
140	20	30-(50)	4	TCS02.140A.QA20	●
140	25	30-(50)	4	TCS02.140A.QA25	●
160	5	30-(50)	4	TCS02.160A.QA05	●
160	10	30-(50)	4	TCS02.160A.QA10	●
160	15	30-(50)	4	TCS02.160A.QA15	●
160	20	30-(50)	4	TCS02.160A.QA20	●
160	25	30-(50)	4	TCS02.160A.QA25	●
160	30	30-(50)	4	TCS02.160A.QA30	●

Altre misure disponibili su richiesta | Other dimensions available on request

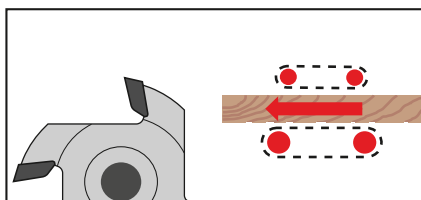
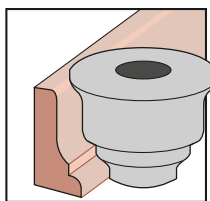
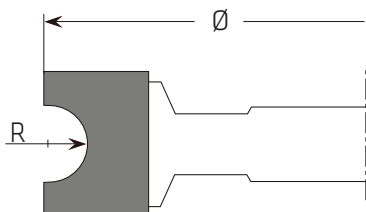
#### MEC - Z=4 - HW - Mod. B

Ø [mm]	R [mm]	d [mm]	Z	Code	Disp./Avail.
120	5	30-(50)	4	TCS02.120A.QB05	●
120	10	30-(50)	4	TCS02.120A.QB10	●
120	15	30-(50)	4	TCS02.120A.QB15	●
120	20	30-(50)	4	TCS02.120A.QB20	●
140	5	30-(50)	4	TCS02.140A.QB05	●
140	10	30-(50)	4	TCS02.140A.QB10	●
140	15	30-(50)	4	TCS02.140A.QB15	●
140	20	30-(50)	4	TCS02.140A.QB20	●
140	25	30-(50)	4	TCS02.140A.QB25	●
160	5	30-(50)	4	TCS02.160A.QB05	●
160	10	30-(50)	4	TCS02.160A.QB10	●
160	15	30-(50)	4	TCS02.160A.QB15	●
160	20	30-(50)	4	TCS02.160A.QB20	●
160	25	30-(50)	4	TCS02.160A.QB25	●
160	30	30-(50)	4	TCS02.160A.QB30	●

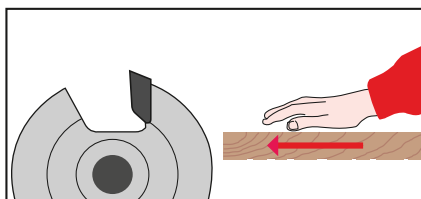
Altre misure disponibili su richiesta | Other dimensions available on request

# TCS02/4

MEC | HW | Z=4



Versione MAN su richiesta | *MAN on request*



## Frese saldobrasate mezzo di tondo con coltelli HW - Z4

### Half-round brazed cutters with HW knives - Z4

Costruite con corpo in acciaio bonificato con 4 taglienti saldobrasati in HW. Indicate per eseguire mezzi tondi e raggiature di bordi. Da montare su macchine topie, scorniatrici, etc. Su specifica richiesta le frese possono essere fornite anche con taglienti saldobrasati in HS.

*Body in hardened and tempered steel with 4 HW brazed cutting edges. Indicated for the execution of half-round and radius profiles on edges. Can be used on toupie, moulder machines and double end tenoner machines, etc. On request the cutters can be supplied with HS cutting edges.*

### MEC - Z=4 - HW

Ø [mm]	R [mm]	d [mm]	Z	Code	Disp./Avail.
120	5	30-(50)	4	TCS02.120A.M005	●
120	10	30-(50)	4	TCS02.120A.M010	●
120	15	30-(50)	4	TCS02.120A.M015	●
120	20	30-(50)	4	TCS02.120A.M020	●
140	5	30-(50)	4	TCS02.140A.M005	●
140	10	30-(50)	4	TCS02.140A.M010	●
140	15	30-(50)	4	TCS02.140A.M015	●
140	20	30-(50)	4	TCS02.140A.M020	●
140	25	30-(50)	4	TCS02.140A.M025	●
160	5	30-(50)	4	TCS02.160A.M005	●
160	10	30-(50)	4	TCS02.160A.M010	●
160	15	30-(50)	4	TCS02.160A.M015	●
160	20	30-(50)	4	TCS02.160A.M020	●
160	25	30-(50)	4	TCS02.160A.M025	●
160	30	30-(50)	4	TCS02.160A.M030	●

Altre misure disponibili su richiesta | *Other dimensions available on request*

# TCS02/5

MEC | HW | Z=4



## Frese saldobrasate ¼ di tondo concavo con coltelli HW - Z4 ¼ Corner-round brazed cutters with HW knives - Z4

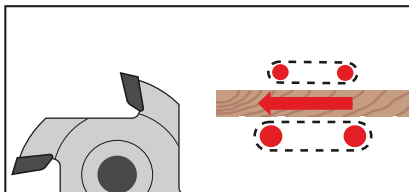
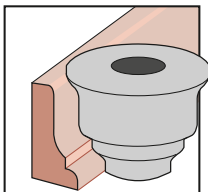
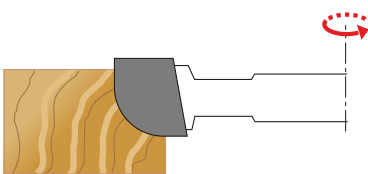
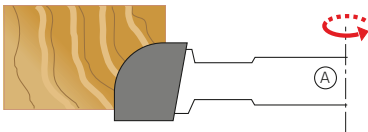
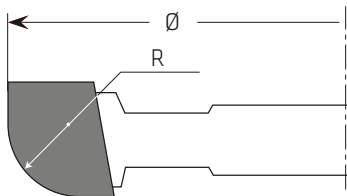
Costruite con corpo in acciaio bonificato con 4 taglienti saldobrasati in HW. Indicate per eseguire quarti di tondo concavi. Da montare su macchine toupie, scorniatricci, etc. Su specifica richiesta le frese possono essere fornite anche con taglienti saldobrasati in HS.

Body in hardened and tempered steel with 4 HW brazed cutting edges. Indicated for the execution of concave quarter-round. Can be used on toupie, moulder machines and double end tenoner machines, etc. On request the cutters can be supplied with HS cutting edges.

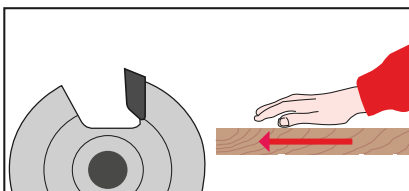
### MEC - Z=4 - HW - Mod. A

Ø [mm]	R [mm]	d [mm]	Z	Code	Disp./Avail.
120	5	30-(50)	4	TCS02.120A.CA05	●
120	10	30-(50)	4	TCS02.120A.CA10	●
120	15	30-(50)	4	TCS02.120A.CA15	●
120	20	30-(50)	4	TCS02.120A.CA20	●
140	5	30-(50)	4	TCS02.140A.CA05	●
140	10	30-(50)	4	TCS02.140A.CA10	●
140	15	30-(50)	4	TCS02.140A.CA15	●
140	20	30-(50)	4	TCS02.140A.CA20	●
140	25	30-(50)	4	TCS02.140A.CA25	●
160	5	30-(50)	4	TCS02.160A.CA05	●
160	10	30-(50)	4	TCS02.160A.CA10	●
160	15	30-(50)	4	TCS02.160A.CA15	●
160	20	30-(50)	4	TCS02.160A.CA20	●
160	25	30-(50)	4	TCS02.160A.CA25	●
160	30	30-(50)	4	TCS02.160A.CA30	●

Altre misure disponibili su richiesta | Other dimensions available on request



Versione MAN su richiesta | MAN on request



### MEC - Z=4 - HW - Mod. B

Ø [mm]	R [mm]	d [mm]	Z	Code	Disp./Avail.
120	5	30-(50)	4	TCS02.120A.CB05	●
120	10	30-(50)	4	TCS02.120A.CB10	●
120	15	30-(50)	4	TCS02.120A.CB15	●
120	20	30-(50)	4	TCS02.120A.CB20	●
140	5	30-(50)	4	TCS02.140A.CB05	●
140	10	30-(50)	4	TCS02.140A.CB10	●
140	15	30-(50)	4	TCS02.140A.CB15	●
140	20	30-(50)	4	TCS02.140A.CB20	●
140	25	30-(50)	4	TCS02.140A.CB25	●
160	5	30-(50)	4	TCS02.160A.CB05	●
160	10	30-(50)	4	TCS02.160A.CB10	●
160	15	30-(50)	4	TCS02.160A.CB15	●
160	20	30-(50)	4	TCS02.160A.CB20	●
160	25	30-(50)	4	TCS02.160A.CB25	●
160	30	30-(50)	4	TCS02.160A.CB30	●

Altre misure disponibili su richiesta | Other dimensions available on request

# TCS02/6

MEC | HW | Z=4



## Frese saldobrasate mezzo di tondi concavi con coltelli HW - Z4

### Concave radius brazed cutters with HW knives - Z4

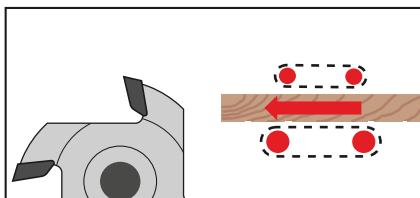
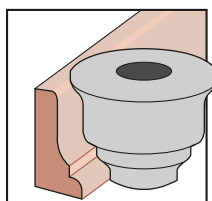
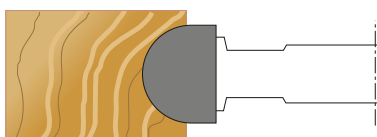
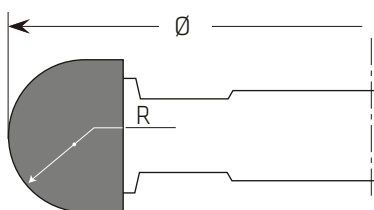
Costruite con corpo in acciaio bonificato con 4 taglienti saldobrasati in HW. Indicate per eseguire mezzi tondi concavi (ad esempio canali raggiati). Da montare su macchine toupie, scorniatrici, etc. Su specifica richiesta le frese possono essere fornite anche con taglienti saldobrasati in HS.

*Body in hardened and tempered steel with 4 HW brazed cutting edges. Indicated for the execution of concave half-round (i.e. round grooves). Can be used on toupie, moulder machines and double end tenoner machines, etc. On request the cutters can be supplied with HS cutting edges.*

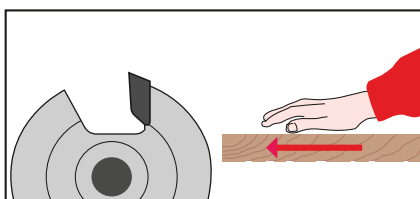
### MEC - Z=4 - HW

Ø [mm]	R [mm]	d [mm]	Z	Code	Disp./Avail.
120	5	30-(50)	4	TCS02.120A.MC05	●
120	10	30-(50)	4	TCS02.120A.MC10	●
120	15	30-(50)	4	TCS02.120A.MC15	●
120	20	30-(50)	4	TCS02.120A.MC20	●
140	5	30-(50)	4	TCS02.140A.MC05	●
140	10	30-(50)	4	TCS02.140A.MC10	●
140	15	30-(50)	4	TCS02.140A.MC15	●
140	20	30-(50)	4	TCS02.140A.MC20	●
140	25	30-(50)	4	TCS02.140A.MC25	●
160	5	30-(50)	4	TCS02.160A.MC05	●
160	10	30-(50)	4	TCS02.160A.MC10	●
160	15	30-(50)	4	TCS02.160A.MC15	●
160	20	30-(50)	4	TCS02.160A.MC20	●
160	25	30-(50)	4	TCS02.160A.MC25	●
160	30	30-(50)	4	TCS02.160A.MC30	●

Altre misure disponibili su richiesta | Other dimensions available on request

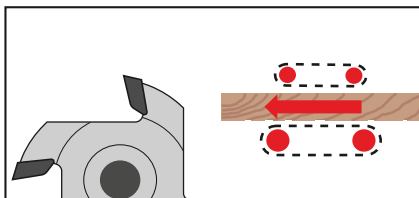
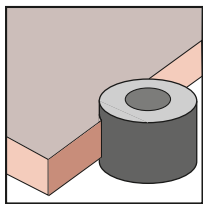
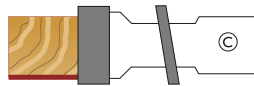
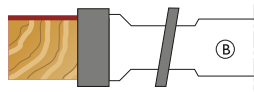
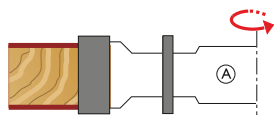
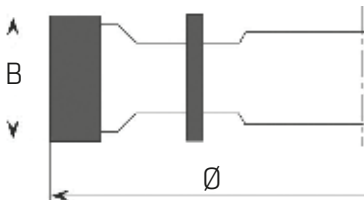


Versione MAN su richiesta | MAN on request

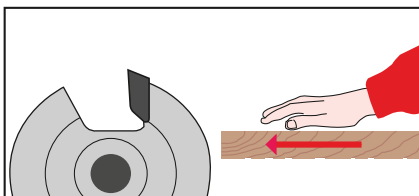


# TCS03/1

MEC | HW | Z=4



Versione MAN su richiesta | MAN on request



## Frese saldobrasate per contornare con coltelli HW - Z4 Brazen joint cutters with HW knives - Z4

Costruite con corpo in acciaio bonificato con 4 taglienti saldobrasati in HW. Eseguite in tre modelli: senza assiale (Mod. A)\*, con assiale negativo (Mod. B)\* o con assiale positivo (Mod. C)\*. Da montare su macchine toupie, scorniciatrici, etc. Su specifica richiesta le frese possono essere fornite anche con taglienti saldobrasati HS. In fase d'ordine indicare il tipo di esecuzione Mod. A/B/C\* e il materiale da lavorare: pannelli o legni massicci nelle varie essenze.

*Body in hardened and tempered steel with 4 cutting edges brazed in HW. Perform in three models: without axial (Mod. A)\*, with negative axial (Mod. B)\* or positive axial (Mod. C)\*. Can be used on toupie, moulding machines, etc. On request the cutters can be supplied with HS cutting edges. On the order request please specify the Mod. A/B/C\* and the material to workout: panel, solid wood in different types.*

### MEC - Z=4 - HW

Ø [mm]	B [mm]	d [mm]	Z	Code	Disp./Avail.
120	20	(30)-40-(50)	4	TCS03.120C.A020	●
120	25	(30)-40-(50)	4	TCS03.120C.A025	●
120	30	(30)-40-(50)	4	TCS03.120C.A030	●
120	35	(30)-40-(50)	4	TCS03.120C.A035	●
120	40	(30)-40-(50)	4	TCS03.120C.A040	●
120	50	(30)-40-(50)	4	TCS03.120C.A050	●
120	60	(30)-40-(50)	4	TCS03.120C.A060	●
120	70	(30)-40-(50)	4	TCS03.120C.A070	●
120	80	(30)-40-(50)	4	TCS03.120C.A080	●

Altre misure disponibili su richiesta | Other dimensions available on request

Ø [mm]	B [mm]	d [mm]	Z	Code	Disp./Avail.
160	20	(30)-40-(50)	4	TCS03.160C.A020	●
160	25	(30)-40-(50)	4	TCS03.160C.A025	●
160	30	(30)-40-(50)	4	TCS03.160C.A030	●
160	35	(30)-40-(50)	4	TCS03.160C.A035	●
160	40	(30)-40-(50)	4	TCS03.160C.A040	●
160	50	(30)-40-(50)	4	TCS03.160C.A050	●
160	60	(30)-40-(50)	4	TCS03.160C.A060	●
160	70	(30)-40-(50)	4	TCS03.160C.A070	●
160	80	(30)-40-(50)	4	TCS03.160C.A080	●

Altre misure disponibili su richiesta | Other dimensions available on request

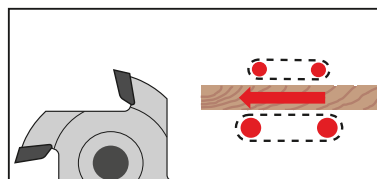
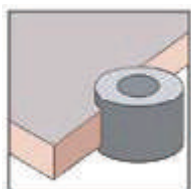
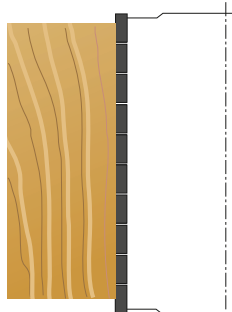
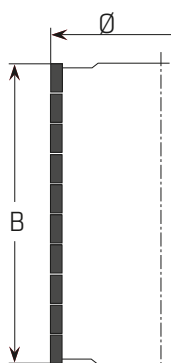
Ø [mm]	B [mm]	d [mm]	Z	Code	Disp./Avail.
200	20	(30)-40-(50)	4	TCS03.200C.A020	●
200	25	(30)-40-(50)	4	TCS03.200C.A025	●
200	30	(30)-40-(50)	4	TCS03.200C.A030	●
200	35	(30)-40-(50)	4	TCS03.200C.A035	●
200	40	(30)-40-(50)	4	TCS03.200C.A040	●
200	50	(30)-40-(50)	4	TCS03.200C.A050	●
200	60	(30)-40-(50)	4	TCS03.200C.A060	●
200	70	(30)-40-(50)	4	TCS03.200C.A070	●
200	80	(30)-40-(50)	4	TCS03.200C.A080	●

Altre misure disponibili su richiesta | Other dimensions available on request

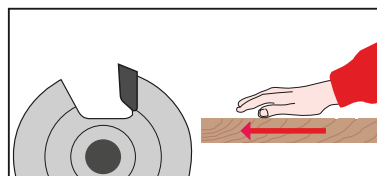
\* In fase di ordine indicare il tipo di esecuzione Mod. A (.A0)/ B (.AN)/ C (.AP) e il materiale da lavorare  
\* At the order specify the Mod. A (.A0)/ B (.AN)/ C (.AP) and the material to workout

# TCS03/2

MEC | HW



Versione MAN su richiesta | MAN on request



## Frese saldobrasate multitaglienti con coltelli HW

### Brazed multiteeth spirals cutters with HW knives

Costruite con corpo in acciaio bonificato con taglienti saldobrasati in HW. Ideali per la lavorazione di contornatura di elementi curvati dove è richiesta una grossa asportazione di materiale. La forma elicoidale e gli ampi scarichi diminuiscono l'assorbimento di potenza e la rumorosità ed aumentano la durata degli utensili. Indicate per la lavorazione di legni massicci, ma anche di altri materiali. Impiegabili su macchine scorniatrici e toupie.

Body in hardened and tempered steel with HW brazed cutting edges. Suitable for trimming curved elements and for high material removal. The large spiral execution reduces the electrical input and the noise and increases the tool life. Suitable for working solid wood and other materials. Can be used on toupie, moulding machines, etc.

#### MEC - Div./Spirals= 10 - HW

Ø [mm]	B [mm]	d [mm]	Div./ Spirals	Code	Disp./Avail.
120	60	(35)-40-(50)	10	TCS03.120C.1006	●
120	80	(35)-40-(50)	10	TCS03.120C.1008	●
120	100	(35)-40-(50)	10	TCS03.120C.1010	●
120	120	(35)-40-(50)	10	TCS03.120C.1012	●
120	140	(35)-40-(50)	10	TCS03.120C.1014	●
120	160	(35)-40-(50)	10	TCS03.120C.1016	●
120	180	(35)-40-(50)	10	TCS03.120C.1018	●
140	60	(35)-40-(50)	10	TCS03.140C.1006	●
140	80	(35)-40-(50)	10	TCS03.140C.1008	●
140	100	(35)-40-(50)	10	TCS03.140C.1010	●
140	120	(35)-40-(50)	10	TCS03.140C.1012	●
140	140	(35)-40-(50)	10	TCS03.140C.1014	●
140	160	(35)-40-(50)	10	TCS03.140C.1016	●
140	180	(35)-40-(50)	10	TCS03.140C.1018	●

Altre misure disponibili su richiesta | Other dimensions available on request

#### MEC - Div./Spirals= 12 - HW

Ø [mm]	B [mm]	d [mm]	Div./ Spirals	Code	Disp./Avail.
120	60	(35)-40-(50)	12	TCS03.120C.1206	●
120	80	(35)-40-(50)	12	TCS03.120C.1208	●
120	100	(35)-40-(50)	12	TCS03.120C.1210	●
120	120	(35)-40-(50)	12	TCS03.120C.1212	●
120	140	(35)-40-(50)	12	TCS03.120C.1214	●
120	160	(35)-40-(50)	12	TCS03.120C.1216	●
120	180	(35)-40-(50)	12	TCS03.120C.1218	●
120	230	(35)-40-(50)	12	TCS03.120C.1223	●
125	60	(35)-40-(50)	12	TCS03.125C.1206	●
125	80	(35)-40-(50)	12	TCS03.125C.1208	●
125	100	(35)-40-(50)	12	TCS03.125C.1210	●
125	120	(35)-40-(50)	12	TCS03.125C.1212	●
125	140	(35)-40-(50)	12	TCS03.125C.1214	●
125	160	(35)-40-(50)	12	TCS03.125C.1216	●
125	180	(35)-40-(50)	12	TCS03.125C.1218	●
125	200	(35)-40-(50)	12	TCS03.125C.1220	●
125	230	(35)-40-(50)	12	TCS03.125C.1223	●
125	240	(35)-40-(50)	12	TCS03.125C.1224	●
140	60	(35)-40-(50)	12	TCS03.140C.1206	●
140	80	(35)-40-(50)	12	TCS03.140C.1208	●
140	100	(35)-40-(50)	12	TCS03.140C.1210	●
140	120	(35)-40-(50)	12	TCS03.140C.1212	●
140	140	(35)-40-(50)	12	TCS03.140C.1214	●
140	160	(35)-40-(50)	12	TCS03.140C.1216	●
140	180	(35)-40-(50)	12	TCS03.140C.1218	●
140	200	(35)-40-(50)	12	TCS03.140C.1220	●
140	230	(35)-40-(50)	12	TCS03.140C.1223	●
140	240	(35)-40-(50)	12	TCS03.140C.1224	●

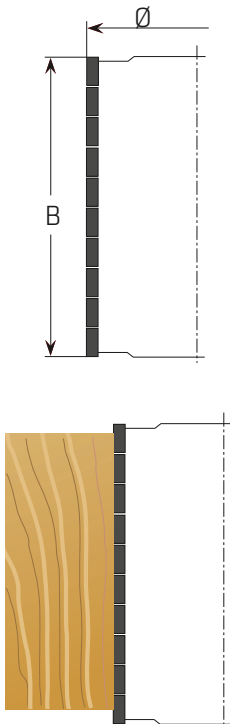
Altre misure disponibili su richiesta | Other dimensions available on request

# TCS03/2

MEC | HW

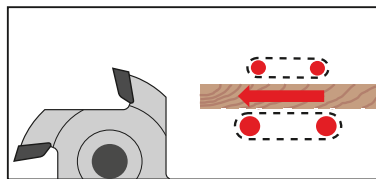
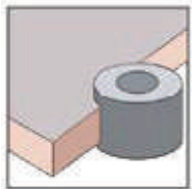
## Frese saldobrasate multitaglienti con coltelli HW Brazed multiteeth spirals cutters with HW knives

### MEC - Div./Spirals= 16 - HW

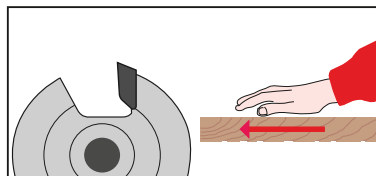


Ø [mm]	B [mm]	d [mm]	Div./ Spirals	Code	Disp./Avail.
120	60	(35)-40-(50)	16	<b>TCS03.120C.1606</b>	●
120	80	(35)-40-(50)	16	<b>TCS03.120C.1608</b>	●
120	100	(35)-40-(50)	16	<b>TCS03.120C.1610</b>	●
120	120	(35)-40-(50)	16	<b>TCS03.120C.1612</b>	●
120	140	(35)-40-(50)	16	<b>TCS03.120C.1614</b>	●
120	160	(35)-40-(50)	16	<b>TCS03.120C.1616</b>	●
120	180	(35)-40-(50)	16	<b>TCS03.120C.1618</b>	●
120	230	(35)-40-(50)	16	<b>TCS03.120C.1623</b>	●
125	60	(35)-40-(50)	16	<b>TCS03.125C.1606</b>	●
125	80	(35)-40-(50)	16	<b>TCS03.125C.1608</b>	●
125	100	(35)-40-(50)	16	<b>TCS03.125C.1610</b>	●
125	120	(35)-40-(50)	16	<b>TCS03.125C.1612</b>	●
125	140	(35)-40-(50)	16	<b>TCS03.125C.1614</b>	●
125	160	(35)-40-(50)	16	<b>TCS03.125C.1616</b>	●
125	180	(35)-40-(50)	16	<b>TCS03.125C.1618</b>	●
125	200	(35)-40-(50)	16	<b>TCS03.125C.1620</b>	●
125	230	(35)-40-(50)	16	<b>TCS03.125C.1623</b>	●
125	240	(35)-40-(50)	16	<b>TCS03.125C.1624</b>	●
140	60	(35)-40-(50)	16	<b>TCS03.140C.1606</b>	●
140	80	(35)-40-(50)	16	<b>TCS03.140C.1608</b>	●
140	100	(35)-40-(50)	16	<b>TCS03.140C.1610</b>	●
140	120	(35)-40-(50)	16	<b>TCS03.140C.1612</b>	●
140	140	(35)-40-(50)	16	<b>TCS03.140C.1614</b>	●
140	160	(35)-40-(50)	16	<b>TCS03.140C.1616</b>	●
140	180	(35)-40-(50)	16	<b>TCS03.140C.1618</b>	●
140	200	(35)-40-(50)	16	<b>TCS03.140C.1620</b>	●
140	230	(35)-40-(50)	16	<b>TCS03.140C.1623</b>	●
140	240	(35)-40-(50)	16	<b>TCS03.140C.1624</b>	●

Altre misure disponibili su richiesta | Other dimensions available on request



Versione MAN su richiesta | MAN on request





# TCS04/1

MEC | HW | Z=4



## Frese saldobrasate per giunzioni con coltelli HW - Z4

### Brazed glue-jointing cutters with HW knives - Z4

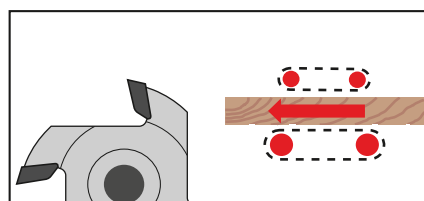
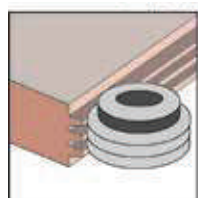
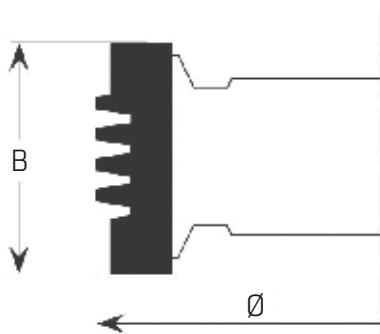
Costruite con corpo in acciaio bonificato con 4 taglienti saldobrasati in HW. Indicate per l'esecuzione di giunzioni con parte profilata fissa. Profili A / B / C sono adatti per giunzioni lungo vena, mentre i profili D / E / F / G / H / I sono stati studiati per eseguire giunzioni controvena o di testa. Da montare su macchine tooupe, scorniciatrici. Su specifica richiesta le frese possono essere fornite anche con taglienti saldobrasati HS.

*Body in hardened and tempered steel with 4 HW brazed cutting edges. Indicated for the execution of joints with fixed profiled part. Profiles A / B / C are suitable for joints along the grain, and profiles D / E / F / G / H / I are indicated for joints against the grain. Can be used on tooupe, moulder machines and double end tenoners machines. On request the cutters can be supplied with HS cutting edges.*

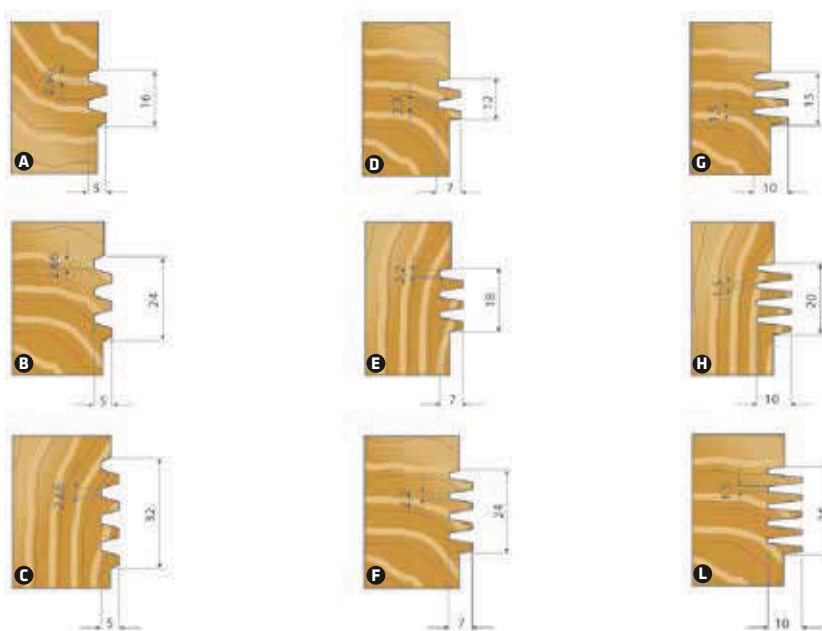
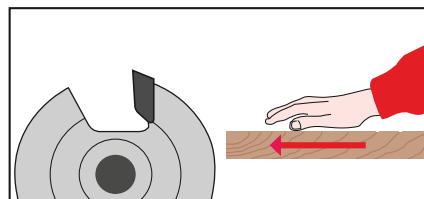
### MEC - Z=4 - HW

Ø [mm]	B [mm]	d [mm]	Z	Profilo/ Profile	Code	Disp./Avail.
140	40	(30)-40-(50)	4	A	TCS04.140C.A040	●
140	50	(30)-40-(50)	4	B	TCS04.140C.B050	●
140	60	(30)-40-(50)	4	C	TCS04.140C.C060	●
140	40	(30)-40-(50)	4	D	TCS04.140C.D040	●
140	50	(30)-40-(50)	4	E	TCS04.140C.E050	●
140	60	(30)-40-(50)	4	F	TCS04.140C.F060	●
140	40	(30)-40-(50)	4	G	TCS04.140C.G040	●
140	50	(30)-40-(50)	4	H	TCS04.140C.H050	●
140	60	(30)-40-(50)	4	L	TCS04.140C.L060	●

Altre misure disponibili su richiesta | Other dimensions available on request



Versione MAN su richiesta | MAN on request



# TCS04/2

MEC | HW | Z=3+3



## Frese saldobrasate per giunzioni regolabili con coltelli HW - Z3 + 3 Braze adjustable jointing cutters with HW knives - Z3 + 3

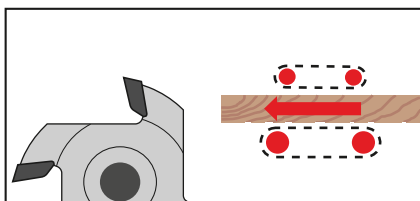
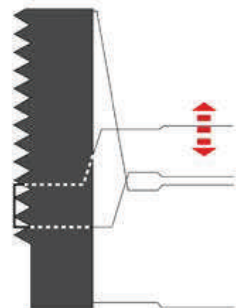
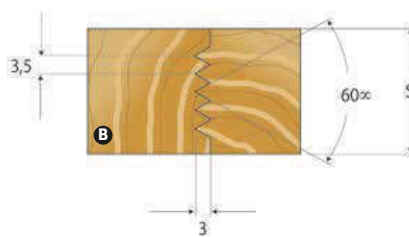
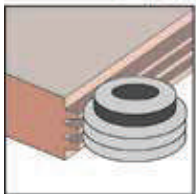
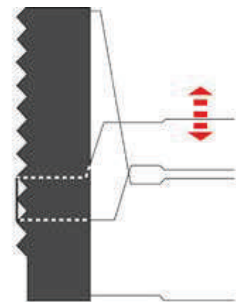
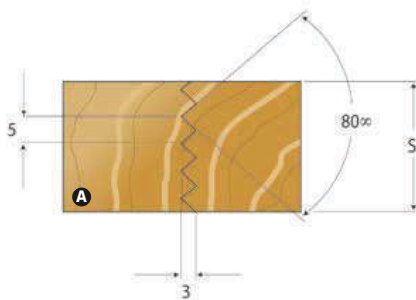
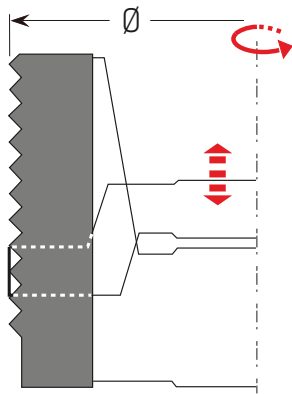
Costruite con corpo in acciaio bonificato con 3 taglienti saldobrasati in HW per ogni fresa. Indicate per l'esecuzione di giunzioni per antine. Da montare su macchine toupie, scorniatrici, etc.

*Body in hardened and tempered steel with 3 HW brazed cutting edges for each tool. Indicated for the execution of joints of furniture doors. Can be used on toupie and moulder machines.*

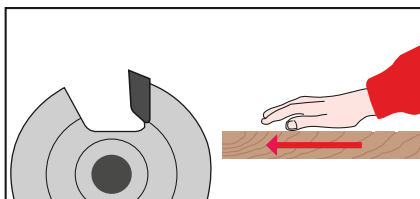
### MEC - Z=3 + 3 - HW

Ø [mm]	B [mm]	d [mm]	Z	Profilo/ Profile	Code	Disp./Avail.
140	80	(30)-40-(50)	3 + 3	A	TCS04.140C.A080	●
140	80	(30)-40-(50)	3 + 3	B	TCS04.140C.B080	●

Altre misure disponibili su richiesta | Other dimensions available on request



Versione MAN su richiesta | MAN on request



# TCS05/1

MEC | HW | Z=3+3 V=6



## Gruppo frese saldobrasate regolabili per spine *Set of brazed cutters for double tenoning machines*

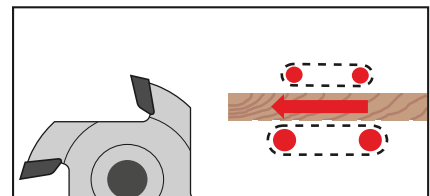
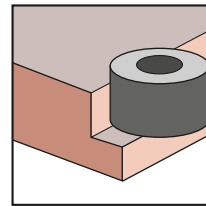
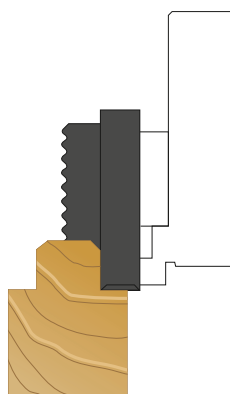
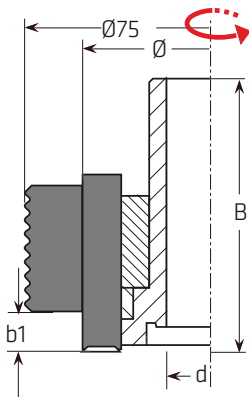
Costruiti con corpo in acciaio bonificato a 3+3 taglienti e 6 rasanti saldobrasati in HW. Rompitruciolo per ridurre lo sforzo di lavorazione. Utilizzabili su macchine tenonatrici doppie Bacci e Balestrini.

*Body in hardened and tempered steel with 3+3 cutting edges and 6 spurs brazed in HW. Chipbreaker to reduce the effort during work processing. Can be used on Bacci e Balestrini tenoning machines.*

### MEC - Z=3+3 V=6 - HW

$\emptyset$ [mm]	B [mm]	b1 [mm]	d [mm]	Z	V	Code DX/RH	Disp./ Avail.	Code SX/LH	Disp./ Avail.
60	65	9,5-30	25	3+3	6	TCS05.60RG.9530	●	TCS05.60LG.9530	●

Altre misure disponibili su richiesta | *Other dimensions available on request*



# TCS05/2

MEC | HW | Z=3+3 V=3



## Gruppo frese saldobrasate regolabili per spine per CNC Set of brazed cutters for CNC machines

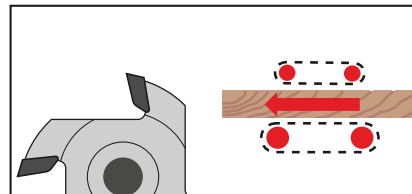
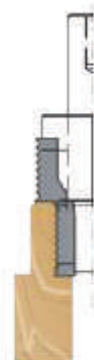
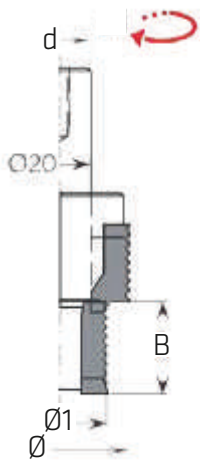
Costruiti con corpo in acciaio bonificato a 3+3 taglienti e 3 rasanti saldobrasati in HW. Rompitruciolo per ridurre lo sforzo di lavorazione. Utilizzabili su macchine CNC.

*Body in hardened and tempered steel with 3+3 cutting edges and 3 spurs brazed in HW. Chipbreaker to reduce the effort during work processing. Can be used on CNC machines.*

### MEC - Z=3+3 V=3 - HW

$\emptyset$ [mm]	$\emptyset 1$ [mm]	B [mm]	d [mm]	Z	V	Code DX/RH	Disp./ Avail.	Code SX/LH	Disp./ Avail.
40	30	10-30	20	3+3	3	TCS05.40RE.1030	●	TCS05.40LE.1030	●

Altre misure disponibili su richiesta | Other dimensions available on request





**Sede / Headquarters**

TWT S.R.L.  
Via dell'artigiano, 57  
38068 Rovereto (TN) – Italia  
Tel. +39.0464.076401  
Fax. +39.0464.436316  
info@twtools  
www.twtools

**Filiale tedesca / German branch**

Zuani Deutschland GmbH  
Miedelstetter Str. 13  
D-72531 Hohenstein – Deutschland  
Fon. +49.07387.9873-0  
Fax. +49.07387.9873-20  
info@zuani.de  
www.zuani.de

**Filiale spagnola / Spanish branch**

Simatec S.L. – Sistemas para madera de alta tecnologia  
Polígono industrial Los Leones, C/ Principal Nave-N  
50298 Pinseque, Zaragoza – España  
Tel. +34.976.656489  
Fax. +34.976.656493  
simatec@simatec.biz  
www.simatec.biz

